

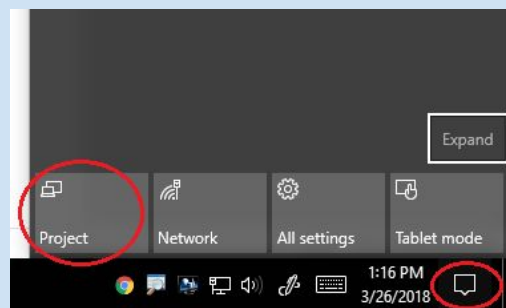
How to connect your laptop or tablet (win 10) to the large flat screen wirelessly:

1. Turn your large screen on.
2. Press the *input* button on the remote or screen and choose "Miracast."
3. Next, power on your laptop or tablet.

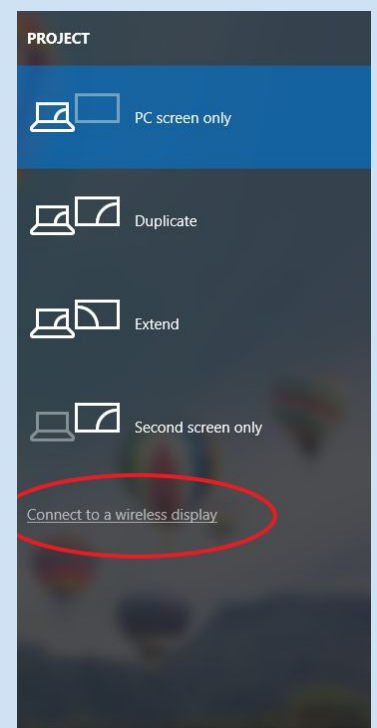


4. On the right side of your screen, use your finger to swipe in if touch screen. Or click the *notification* symbol in bottom right.

5. Choose "Project."



6. Choose "Connect to a wireless display."
You will see your screen listed by classroom number. Select it.



7. You should then see a connecting message on the large screen. Wait until your device appears on the large screen.



8. You are now connected.

9. To disconnect, swipe in again or click the notification icon and, choose *“Project”* and then *“Disconnect.”*

If you are going back to a different device, such as your desktop, you will need to change the input again

Troubleshooting:

- 1) Try the same process again.
- 2) Turn both the large screen and your device off. Restart and try again.
- 3) Unplug the miracast box from the back of the large screen to reset. Try again.